

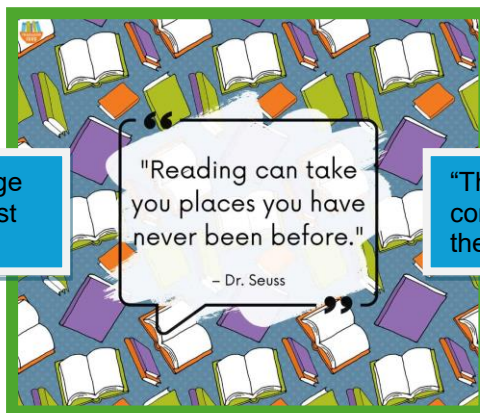


## St Bartholomew's CE Primary School



### News in school 12.1.24

Good afternoon,



"There are many little ways to enlarge your world. Love of books is the best of all." – Jacqueline Kennedy

"Reading can take you places you have never been before."  
– Dr. Seuss

"The reading of all good books is like conversation with the finest (people) of the past centuries." – Descartes

Just before Christmas, I had the pleasure of spending a few hours with the Church Ladies. I talked to them about St Bartholomew's, who we are and what we do. I am incredibly grateful to say that Janet Izatt, who has been raising money for the village for many years, raised £100 selling second hand books during December and has donated it to our library fund. Thank you so much Janet!

Since September, we have raised £34.21 via PTFA Easy Fundraising. If you haven't already signed up, please, please do as every little helps and it doesn't cost you anything. Details can be found at the end of this newsletter.

Every lunchtime, I eat in the hall with the children, I really enjoy our conversations and it is lovely to see beautiful table manners and the support and encouragement that our older children give to our younger ones. However, I have noticed that many children are not eating the hot dinners that they are given. Please do ask your children about their meals and change choices accordingly. We are always happy to hear feedback too and will act on anything that we can to improve your child's eating and enjoyment in the dinner hall.

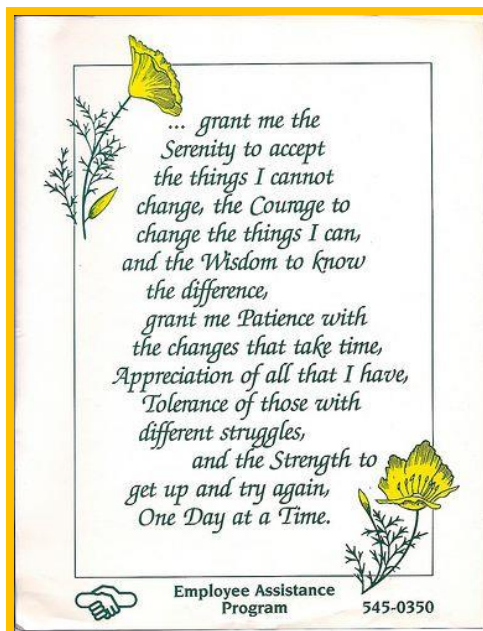
Please be aware that if your child is due to start school in September 2024 that the application process closes on Monday 15<sup>th</sup> January 2024. Applications can be made online at <https://www.lincolnshire.gov.uk/schooladmissions/apply-school/2>, alternatively, please call the Education Team on 01522 782030.

If your child is in Year 5 you will have been sent an email via ParentMail which gives the details of how to register for your child to sit the 11+ at Spalding High School or Spalding Grammar School.

Your child will be bringing home their Termly Attendance Summary letter today, which informs you of their termly and year to date attendance percentage, as well as the number of lates and unauthorised lates received termly and year to date.

I hope that you have a wonderful weekend and look forward to seeing everyone on Monday.  
Take care, Miss Ingle

## School worship



## Bible verse of the week

### Ephesians 4:2

*"with all humility and gentleness, with patience, bearing with one another in love"*

## Celebrated this week in Collective Worship

w/e 12.1.2024	Fantastic award	Excellence award
Apple Class	Ronnie-Rai	Joseph
Palm Class	Thomas	Harry
Oak Class	Sofia	Lyla
Willow Class	Daisy	Yadhavi

## Attendance winner of the week

Palm Class are the attendance winners of the week and will receive the reward of taking Gerald to the park at playtime one day next week.

## Dates for Your Diary

Date	Time	Event
15 <sup>th</sup> January 2024		Reception 2024 application process closes
7 <sup>th</sup> February 2024		Class Photos
7 <sup>th</sup> February 2024	3.15- 4.30pm	PTFA Valentine Disco
16 <sup>th</sup> February 2024		Year 5 Girls: 11+ Registration closes for Spalding High School
1 <sup>st</sup> March 2024		Year 5 Boys: 11+ Registration closes for Spalding Grammar School
26 <sup>th</sup> April 2024		Year 1 – Learn2Ride course
15 & 16 <sup>th</sup> May 2024		Year 5 – L1 & 2 Bikeability
26-28 <sup>th</sup> June 2024		Year 6 Residential

Please be aware that Lincolnshire County Council have amended the term dates for 2024-25. Tuesday 22<sup>nd</sup> April 2025 is now an Inset Day and Monday 2<sup>nd</sup> June 2025 is now a normal school day. Please see our school website for all term dates.

All calendar dates/events can be found on our school website by clicking on the 'calendar' tab. If you wish to add an event to your own calendar, you can do so by clicking on the link and pressing the 'add to calendar' button.

## Any Other Information/Reminders

### PE Timetable Term 3:

	Outdoor PE	Indoor PE
Apple	Monday	Wednesday
Palm	Tuesday	Thursday
Oak	Thursday	Monday
Willow	Friday	Tuesday

### Home School Agreement

If you haven't done so already, please complete the Home School Agreement 2023-24 form that can be found on ParentMail.

### School Mobile Phone

We now have a school mobile for afterschool care. The number is: **07396725986** It will be turned off during the school day. It will only be available for parents who have children attending afterschool care during afterschool care hours. **PLEASE CONTACT THE SCHOOL OFFICE FIRST IN ALL CIRCUMSTANCES.**

### After School Kids Club

Please be aware that if parents/carers/guardians are more than 10 minutes late collecting from after school clubs at 4pm there will be a charge of a full hour, per child, childcare cost.

### Pencil Cases

Please remember to ask your child regularly if they require anything replenishing.

### Severe Weather/Snow Closure

In the event of severe weather, we will always strive to ensure that the school remains open, but in the event that extreme weather conditions necessitate the closure of the school we will advise you of this in a number of ways. We will notify parents via email via Parentmail, update the school website and advise Lincs FM and BBC Lincolnshire radio stations so listen out to their broadcasts or log onto their websites. We will also post a message on the school's Facebook and 'X' pages.

### School Opening

Our school office is open from 8.30am to 3.15pm, Monday to Friday. If you wish to contact the school out of these hours, please call 01775 640357 and leave a message on our answerphone or alternatively email [enquiries@stbartholomews.lincs.sch.uk](mailto:enquiries@stbartholomews.lincs.sch.uk).

**PTFA Easy Fundraising** is a great source of funds for the school which could raise £££s for the PTFA. A range of retailers, holiday companies, Ebay, Tesco and many more donate a percentage of money spent when parents / carers / guardians spend money. It costs the consumer absolutely nothing at all. Parents/carers/guardians need to click on the easy fundraising link:

<https://www.easyfundraising.org.uk/panel/>

- Register an email and password
- Nominate your cause
- Download a reminder tool to browser so when purchases are made through a partner a reminder is sent.

Make the purchase and a percentage goes to St Barts!

£34.21 raised since September 2023



